

SCHOOL

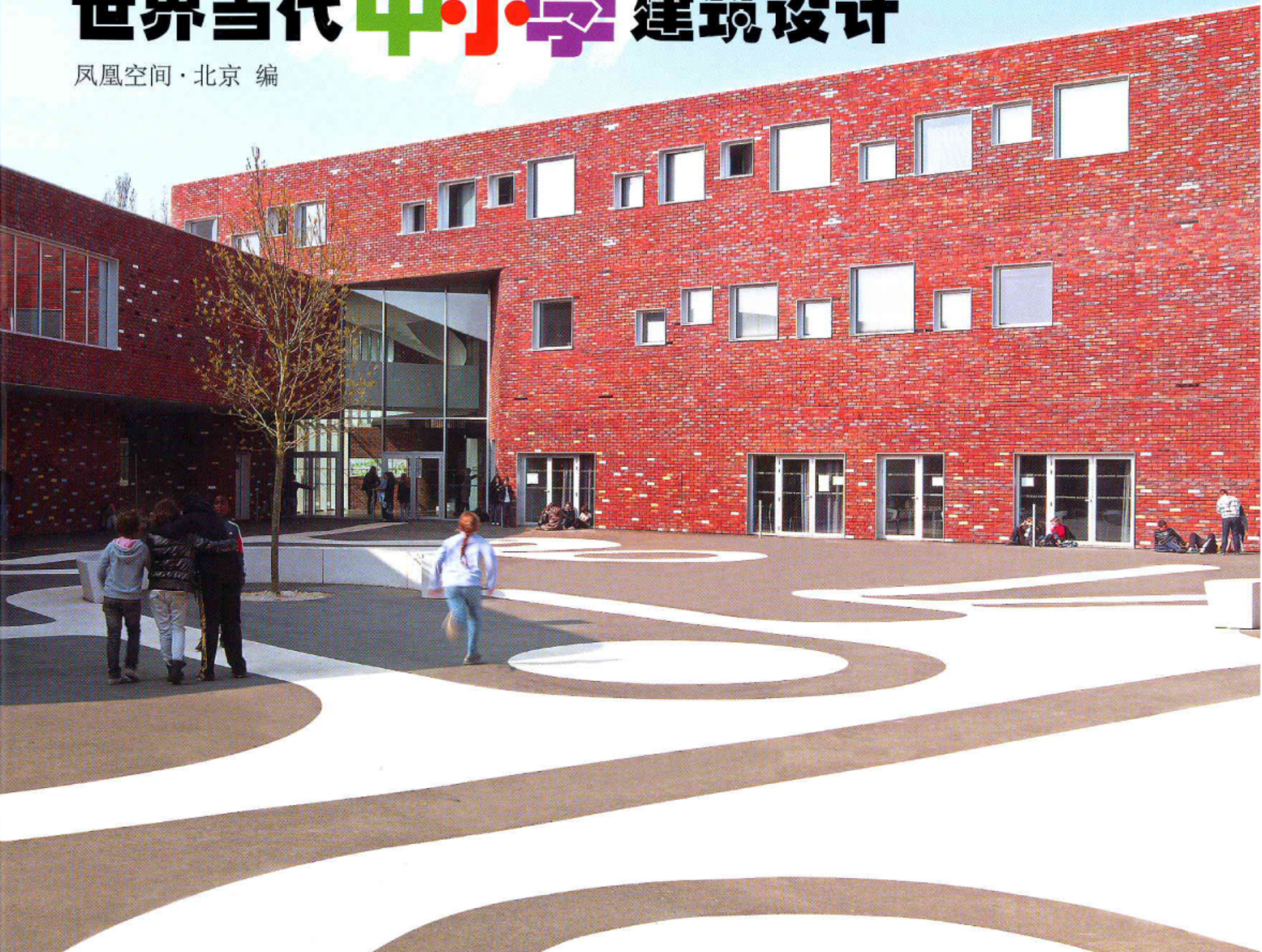
# ARCHITECTURE

DESIGN FOR ELEMENTARY AND  
SECONDARY SCHOOLS

成长空间

世界当代 **中·小·学** 建筑设计

凤凰空间·北京 编



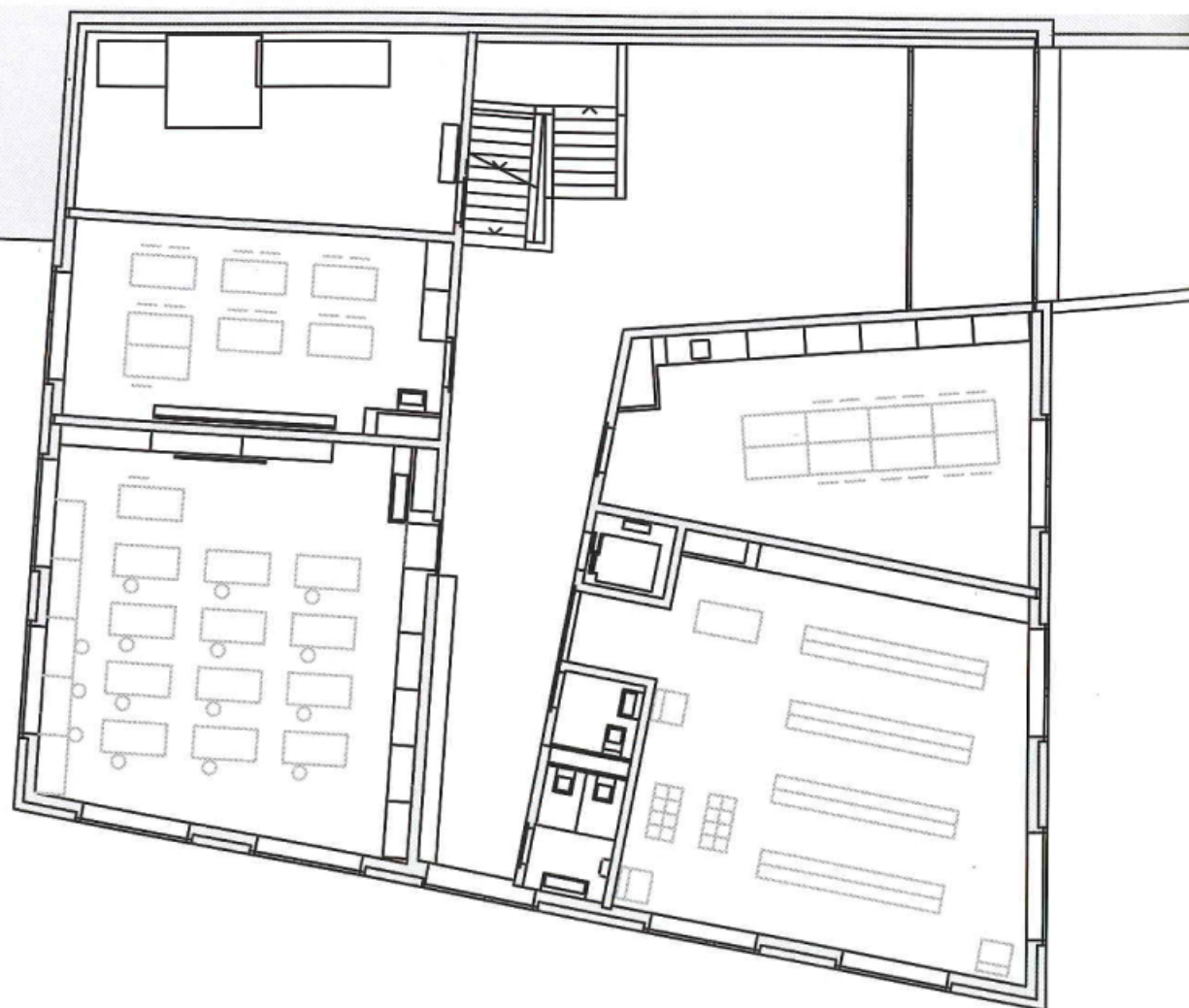


# PRIMARY SCHOOL IN VOLLÈGES

## 瑞士 瓦莱省某小学

项目设计: Savioz Fabrizzi Architectes  
项目地点: 瑞士, 瓦莱  
工程管理: Besse-Felley Architecture  
土木工程师: Kurmann et cretton sa  
暖通工程师: Tecnoservice Engineering  
业主: 沃利格斯公共行政当局  
施工时间: 2009-2010年  
基地面积: 18 600 m<sup>2</sup>  
占地面积: 442 m<sup>2</sup>  
总面积: 1 326 m<sup>2</sup>  
建筑物体积 (sia 116): 5 600 m<sup>3</sup>  
摄影: Thomas Jantscher

**Architects:** Savioz Fabrizzi Architectes  
**Location:** Valais, Switzerland  
**Works Management:** Besse-Felley Architecture  
**Civil Engineer:** Kurmann et cretton sa  
**Hvac Engineer:** Tecnoservice Engineering  
**Client:** Administration Communal de vollèges  
**Implementation (Date):** 2009-2010  
**Site Area:** 18,600 m<sup>2</sup>  
**Built Area:** 442 m<sup>2</sup>  
**Gross Area:** 1,326 m<sup>2</sup>  
**Building Volume (sia 116):** 5,600 m<sup>3</sup>  
**Photographs:** Thomas Jantscher



这座新的教学楼位于建筑基地的西侧, 与原有的多功能厅紧密相连。这样一来, 中心就形成一个操场。这个开放空间禁止车辆入内, 为场地内的其他建筑, 如体育馆、学校和足球俱乐部餐厅开辟了通道。

位于北侧边缘的屋顶空间将教学楼和运动馆连为一体。富有特色的楼梯通向较高的楼层, 连接着公共交通系统。清晰分明的功能分区不仅保证了使用者的安全, 而且使各种设施均得到了合理的利用。

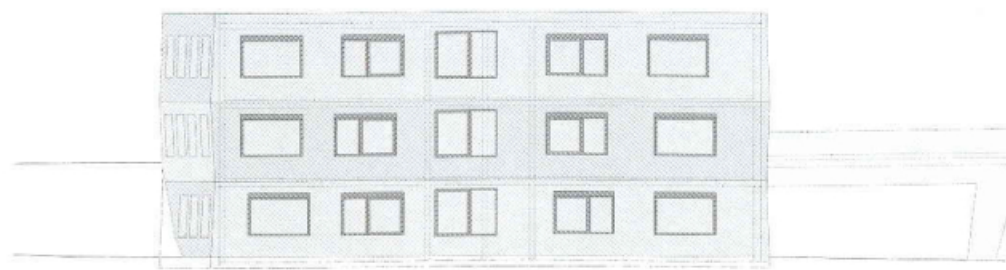
为了与原有的多功能厅保持一致, 建筑的外部使用了混凝土构筑, 将各个部分融为一个有机整体。各楼层的外立面形成了微妙的角度, 呈现了雕塑般的效果。

主楼是一个3层的建筑, 每层均设有4间双面朝向的教室。

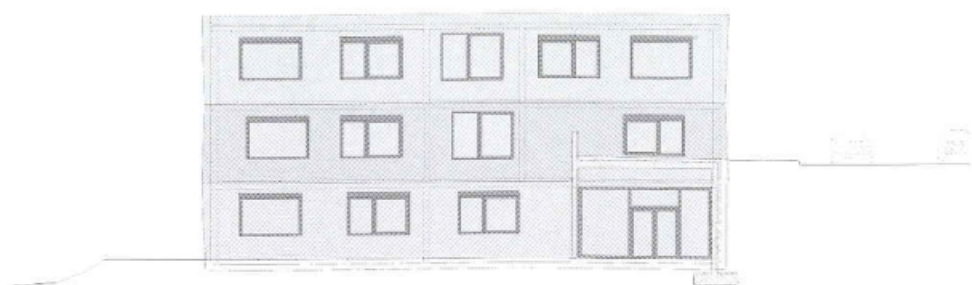
作为附属楼的延伸, 建筑的地面采用了纯混凝土浇筑。室内布置与之形成强烈反差, 内部的教室以落叶松木质面板和暖色调装饰, 营造了一个更加温馨的生活空间。

建筑依照瑞士“迷你”能源标准而建, 其供暖由区域供热站提供。

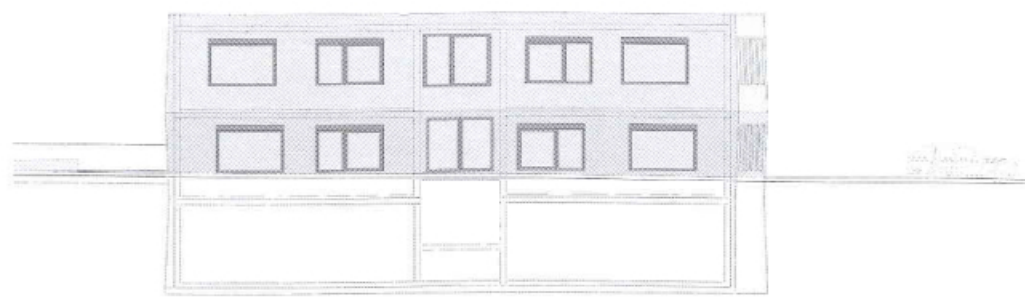




南立面图 SOUTH FAÇADE



东立面图 EAST FAÇADE



北立面图 NORTH FAÇADE



The new school building is sited to the west of the development plot and creates, with the multipurpose hall, a school complex with the schoolyard as its centre. This vehicle-free space provides access to the site's various buildings: the multipurpose sports hall, primary school and clubhouse for the local football club.

A covered area alongside the open space connects the school to the sports hall. From here, a staircase leads to the upper part of the site, where there are public transport links.

This clear delimitation of functions ensures safety for users and optimum operation of the facilities.

The façades are in concrete, to harmonise with the sports hall and unify the different parts of the complex. The façades of the school are treated in a "plastic" manner, consisting of slanted sections.

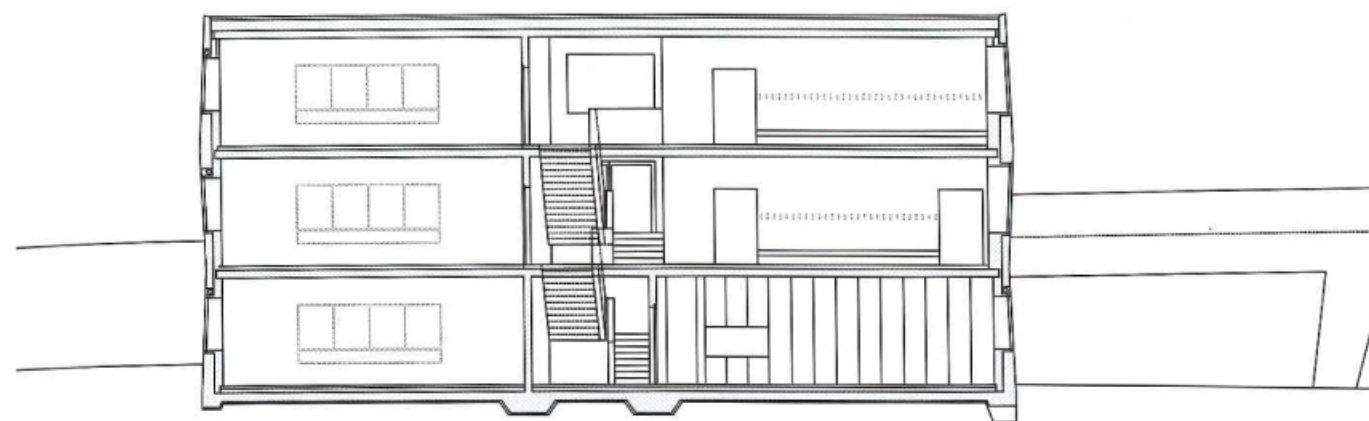
The main building is arranged on three floors. Each floor has four classrooms, all with dual aspect.

The corridors are in raw concrete and continue the style of the exterior, contrasting with the warm colours and larch panelling in the classrooms.

This building is constructed to Swiss Minergie standards for low-energy-consumption buildings. It is heated via the municipality's district heating system.







剖面图 SECTION







一层平面图 FIRST FLOOR PLAN



二层平面图 SECOND FLOOR PLAN

