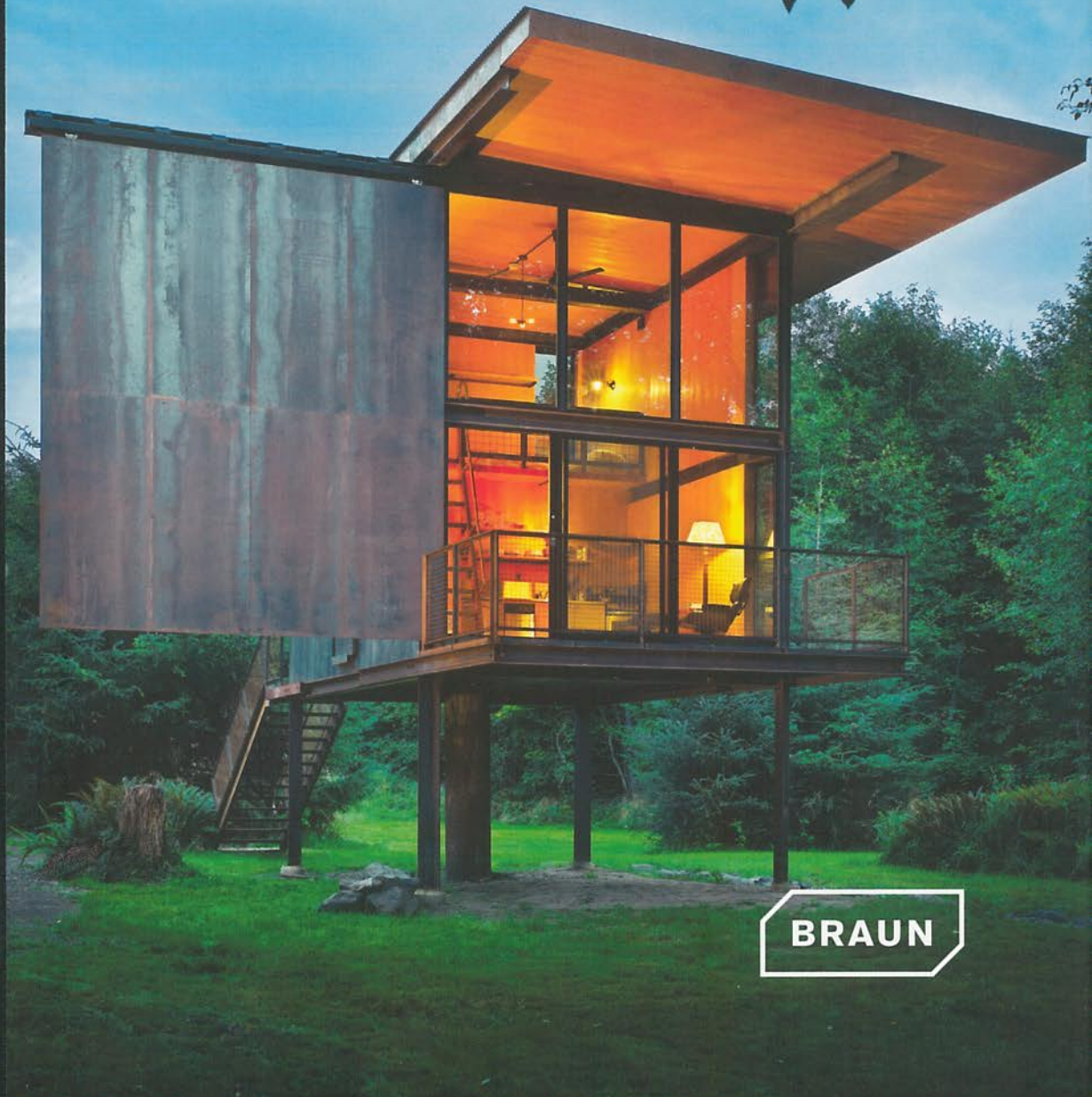


XS

LISA BAKER

SMALL HOUSES BIG TIME



BRAUN



ARCHITECTS: SAVIOZ FABRIZZI ARCHITECTES
PROJECT ADDRESS: LE BIOLLEY, 1937 ORSIÈRES, SWITZERLAND
GROSS FLOOR AREA: 48 M²
MAIN MATERIALS: WOOD
COMPLETION: 2012



BOISSET HOUSE

LE BIOLLEY, SWITZERLAND

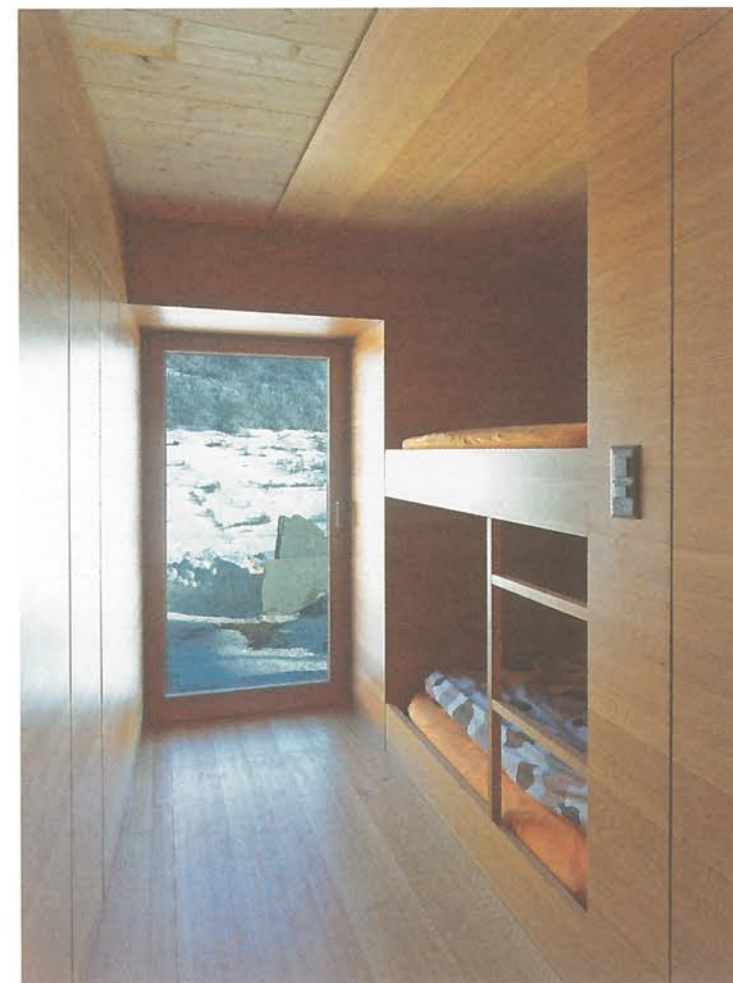
In this alpine cabin new and old have been fused together to create the perfect symbiosis.



ROOMS: 4
LIVING / DINING / COOKING: 16 M²
BEDROOM 1: 16 M²
BEDROOM 2: 10 M²
BATHROOM: 6 M²
SETTING: RURAL
ENERGY CONCEPT: WOOD STOVE



This project involved the transformation of a traditional barn and stable measuring just 16 square meters and comprising a stone base topped with a wooden board construction and a hay loft. The exterior of the building has been left virtually untouched. The only major change was the inclusion of new window openings that would aid passive solar gain during the cold winter months. Some elements were also altered to improve safety. The entrance is located on the second floor, so that visitors are guided directly into the kitchen and dining room. The space also features a large opening that offers generous views of the alps. The parents' bedroom is located on the upper floor, while the children's rooms can be found downstairs, where the former cattle entrance has been altered to create another large opening that draws light deep inside.



The larch cladding of the interiors not only provides insulation but also gives the design a sense of tradition and homeliness.

Large windows not only illuminate the room, they direct the gaze and frame the breathtaking alpine panorama.

